



ABOVE  
*On the Rise #6*, 2014, mixed media, 36 x 44 inches  
COVER  
*Blue Fissures*, 2014, mixed media, 30 x 40 inches

#### ARTIST BIO

Judith Brassard Brown grew up in Rhode Island then attended Boston University's School for the Arts for her BFA and MFA. A professor at Montserrat College of Art, she chairs the Foundation program and teaches painting and drawing classes on all levels. Founder and faculty of Montserrat's Summer Intensive Studios in Italy, she continues to investigate other cultures, histories and landscapes as central themes in her work. She lives and works at Pearl Street Studios in Boston (Dorchester) MA.

April 29 - May 31, 2015

Judith Brassard Brown  
*From the Ground Up*

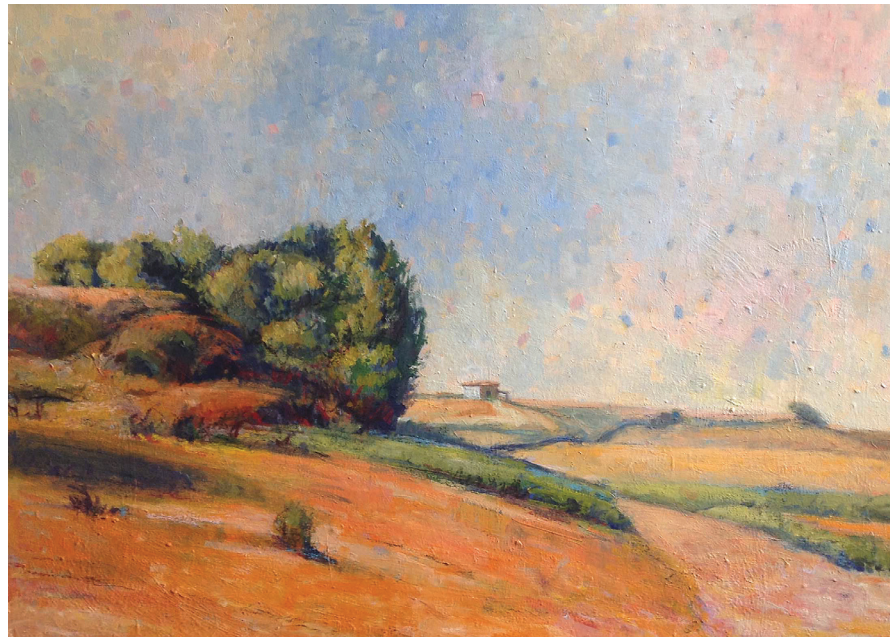


Kingston Gallery



Kingston Gallery  
450 Harrison Avenue #43  
Boston, MA 02118  
617 423 4113  
[kingstongallery.com](http://kingstongallery.com)  
Wednesday - Sunday 12 - 5pm  
or by appointment





**Judith Brassard Brown**  
*From the Ground Up*

Landscapes are a recurrent theme in Brown's work. She moves from the sun-drenched pastoral countryside to more subjective terrain where images reference natural phenomenon or man-made disasters. Brown achieves fine, complex textures by adding collage elements to the paint, mostly small pieces of paper taken from old letters, documents, receipts, and other sources. In some instances, she applies a spray of torn papers and then removes some of them later revealing previous layers of paint. In others, collage elements operate as shrapnel, expose fissures in the earth's crust, punctuate explosions seen close-up or at a far distance.

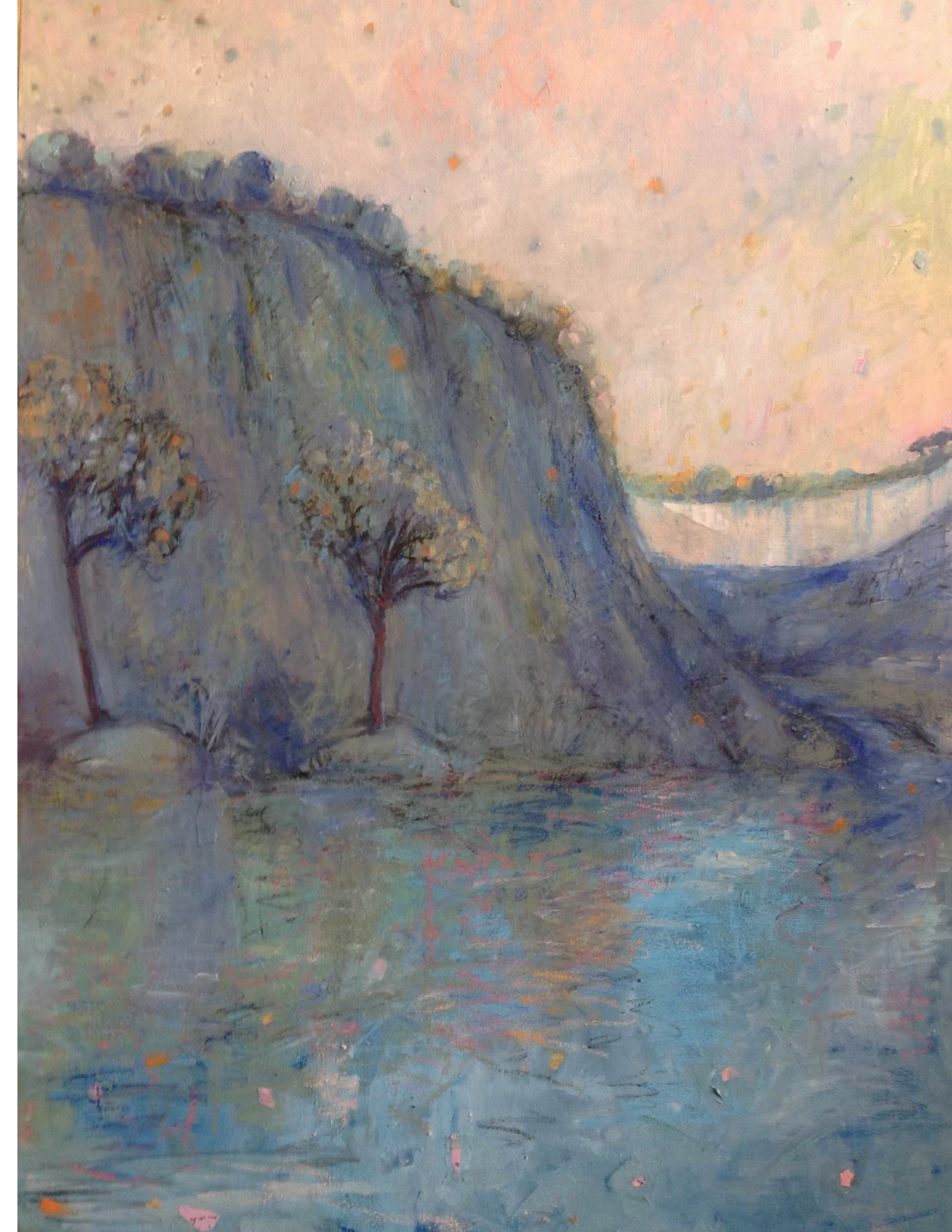
Brown considers the act of viewing as an opportunity to heal. She quotes the photographer Henri Cartier-Bresson to get at her meaning: "*photography*



*is an immediate action, and drawing is a meditation.*" While her paintings may appear traditional at first glance, they do not recreate one specific location. Rather, the landscapes provide links to universal connections across boundaries of time or a captured moment.

In her paintings, we may contrast what we see with what we sense below the surface. As we move through her images, their qualities activate our capacity to connect with others and with our own buried emotions. As we recognize what is compressed, so may that recognition activate a corresponding release of psychic burden and an increase in joy.

**Shana Dumont Garr**  
 Director, Kingston Gallery



LEFT TO RIGHT  
*In Vulci*, 2015, mixed media, 30 x 40 inches  
*Leaving Tuscania*, 2014, mixed media, 30 x 40 inches  
*Vulci #14*, 2015, mixed media, 30 x 40 inches